

1997 Trane Air Cooled Liquid Chiller- 215 Tons

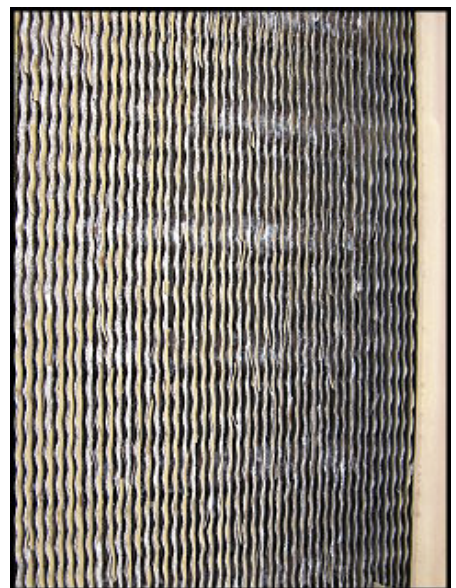
Mfg: Trane

Model: RTAA2154XN01A3COBK

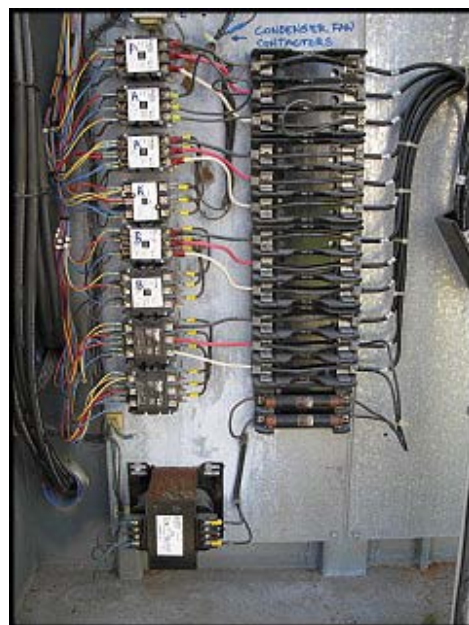
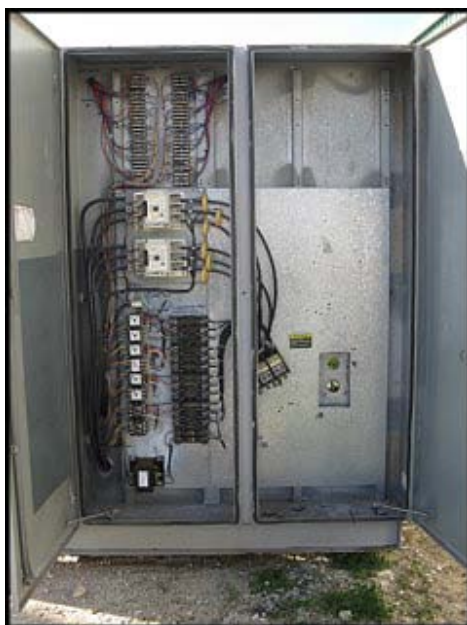
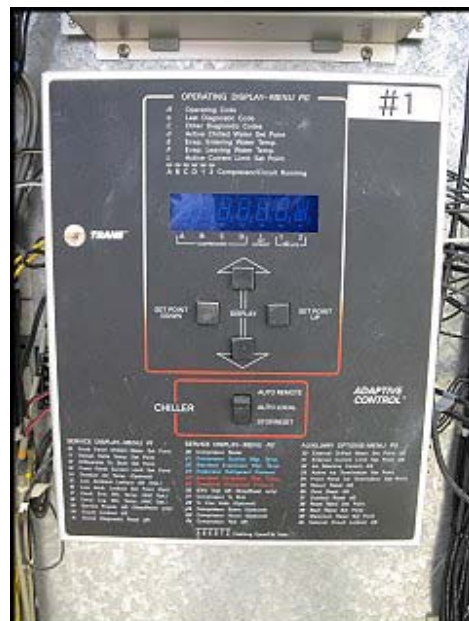
Stock No: ABCC201.55

Serial No: U97MO7068

1997 Trane Air Cooled Liquid Chiller. Model: RTAA2154XN01A3COBK. S/N: U97MO7068. Refrigerant: R-22. Refrigerant side factory test pressure hi/lo: 450/300 psig. System requirements: 460 V, 60 Hz, 3 phase. Trane Helirotor compressor: model: CHHB100TKA0R119AHNN, S/N: N09G00565, 460/400V, 60/50Hz, 3 phase. Trane Helirotor compressor: model: CHHB199TNKON119A, S/N: UA7M581, 460/400V, 60/50Hz, 3 phase. (14) Condenser Fan Motors, 1-1/2 hp, 460 V, 2.8 FLA, 60 Hz, 3 phase. Overall dimensions: 23 ft. 2 in. L x 7 ft. 5 in. W x 7 ft. 11 in. H.







TRANE		MODEL NUMBER		SERIAL NUMBER	
RTAA2154NDIA308K		U97M768			
DATE VOL. 45/78/3		MFG. 424		MFG. 507	
TYPE OF USE OUTDOOR		VOLT. AC 414-506		CIRCUIT 1 307	
CIRCUIT 2		CIRCUIT 3		CIRCUIT 4	
CIRCUIT 5		CIRCUIT 6		CIRCUIT 7	
CIRCUIT 8		CIRCUIT 9		CIRCUIT 10	
CIRCUIT 11		CIRCUIT 12		CIRCUIT 13	
CIRCUIT 14		CIRCUIT 15		CIRCUIT 16	
CIRCUIT 17		CIRCUIT 18		CIRCUIT 19	
CIRCUIT 20		CIRCUIT 21		CIRCUIT 22	
CIRCUIT 23		CIRCUIT 24		CIRCUIT 25	
CIRCUIT 26		CIRCUIT 27		CIRCUIT 28	
CIRCUIT 29		CIRCUIT 30		CIRCUIT 31	
CIRCUIT 32		CIRCUIT 33		CIRCUIT 34	
CIRCUIT 35		CIRCUIT 36		CIRCUIT 37	
CIRCUIT 38		CIRCUIT 39		CIRCUIT 40	
CIRCUIT 41		CIRCUIT 42		CIRCUIT 43	
CIRCUIT 44		CIRCUIT 45		CIRCUIT 46	
CIRCUIT 47		CIRCUIT 48		CIRCUIT 49	
CIRCUIT 50		CIRCUIT 51		CIRCUIT 52	
CIRCUIT 53		CIRCUIT 54		CIRCUIT 55	
CIRCUIT 56		CIRCUIT 57		CIRCUIT 58	
CIRCUIT 59		CIRCUIT 60		CIRCUIT 61	
CIRCUIT 62		CIRCUIT 63		CIRCUIT 64	
CIRCUIT 65		CIRCUIT 66		CIRCUIT 67	
CIRCUIT 68		CIRCUIT 69		CIRCUIT 70	
CIRCUIT 71		CIRCUIT 72		CIRCUIT 73	
CIRCUIT 74		CIRCUIT 75		CIRCUIT 76	
CIRCUIT 77		CIRCUIT 78		CIRCUIT 79	
CIRCUIT 80		CIRCUIT 81		CIRCUIT 82	
CIRCUIT 83		CIRCUIT 84		CIRCUIT 85	
CIRCUIT 86		CIRCUIT 87		CIRCUIT 88	
CIRCUIT 89		CIRCUIT 90		CIRCUIT 91	
CIRCUIT 92		CIRCUIT 93		CIRCUIT 94	
CIRCUIT 95		CIRCUIT 96		CIRCUIT 97	
CIRCUIT 98		CIRCUIT 99		CIRCUIT 100	



Remanufactured by Trane, Charlotte, NC 28208	
Model No:	CHHB100TKA0R119AHNN
Serial No:	N09G00565
RATED LOCKED ROTOR CURRENT	
VOLTAGE WYE DELTA	COM04465
480/60/3 299 896	
480/50/3 279 884	
VOLTAGE UTILIZATION RANGE:	
414-506 340-460	
REFRIGERANT R22	
ASSEMBLED IN THE USA	
Trane Business Services X33003300130	
HELIROTOR™ COMPRESSOR	
MANUFACTURED UNDER ONE OR MORE OF THE FOLLOWING U.S. PATENTS:	
RE: 3,256,8 4,342,310 4,573,324 4,622,049 4,662,190 4,762,469 4,987,517 4,463,654 5,203,685 5,311,826	