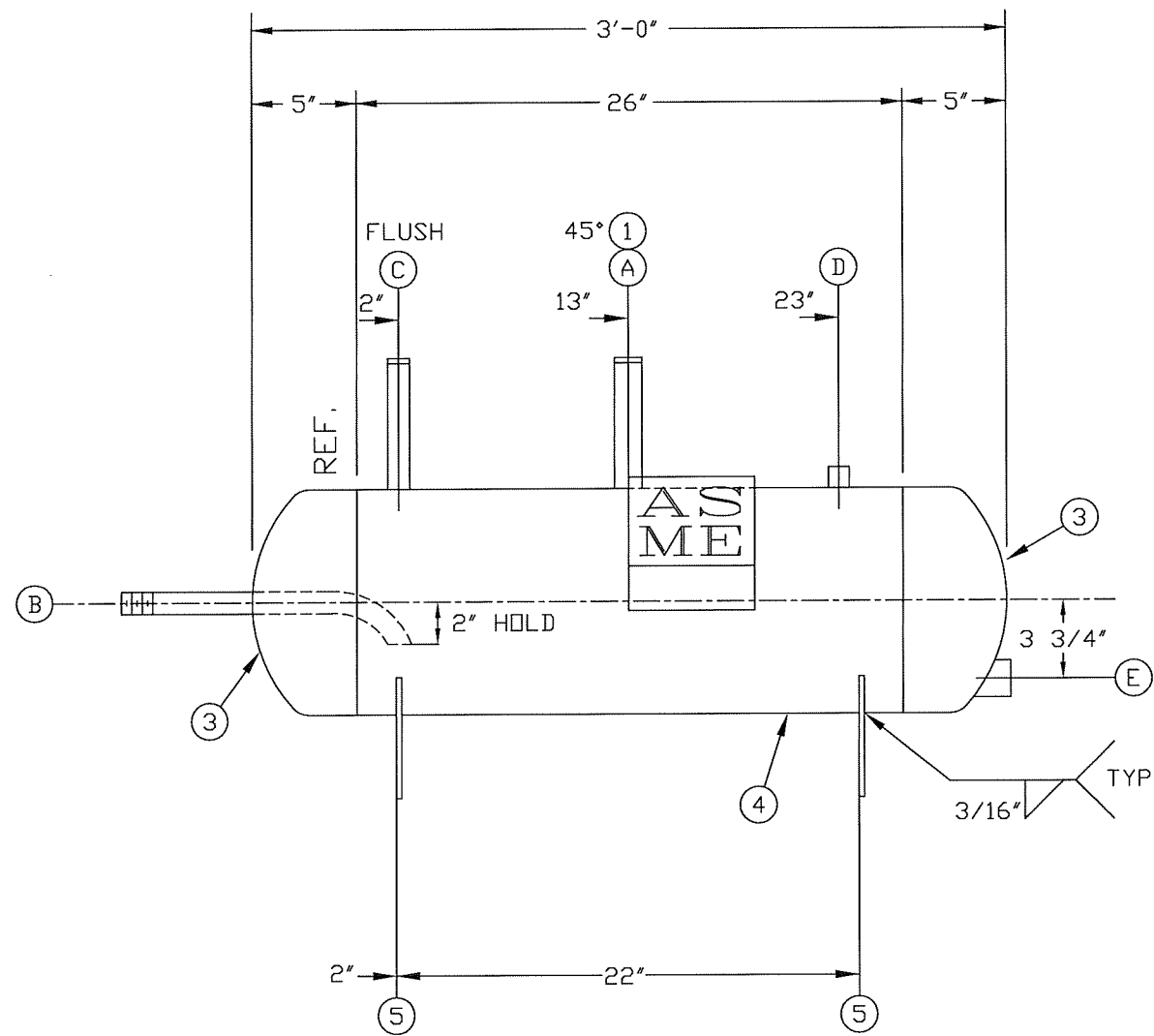
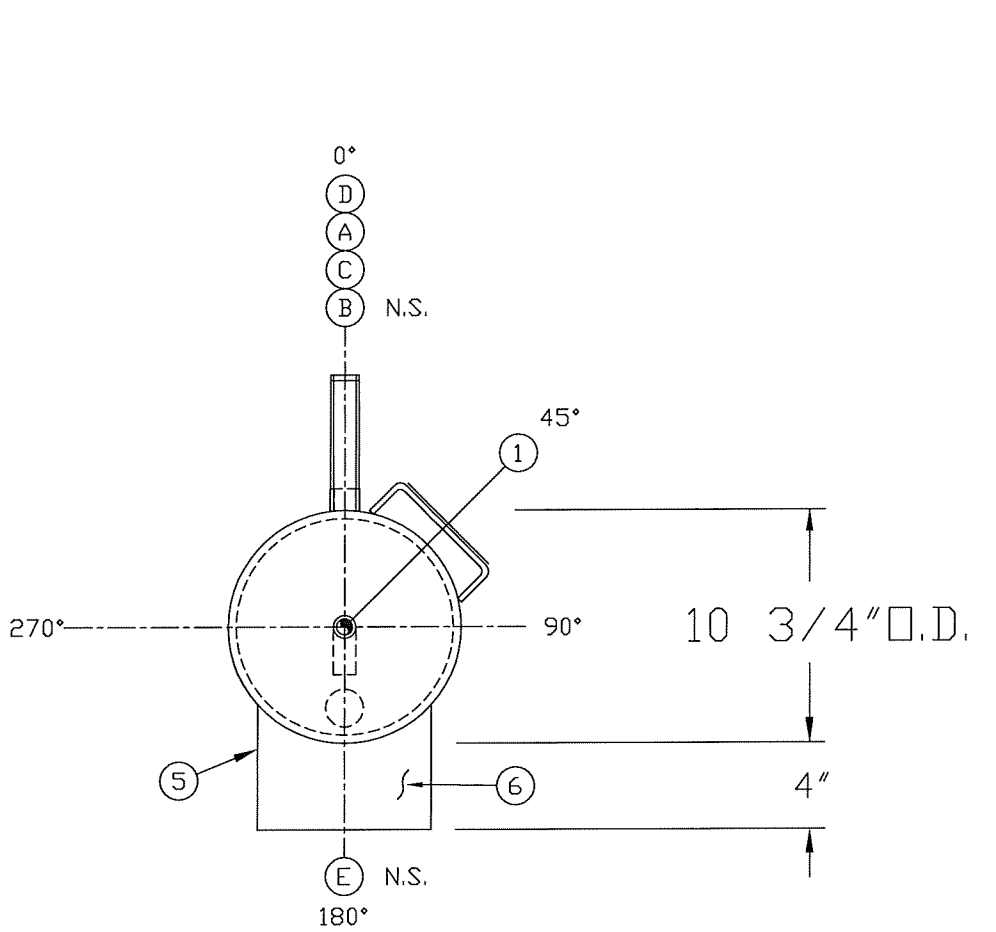
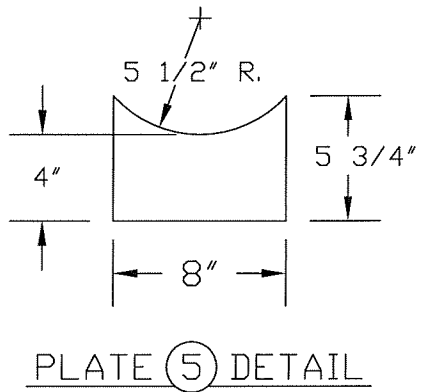
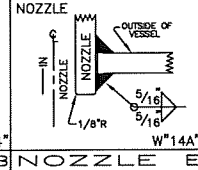
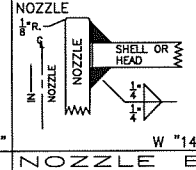
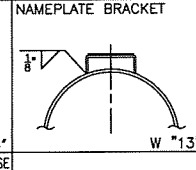
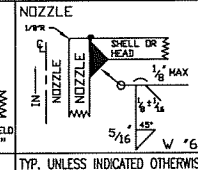
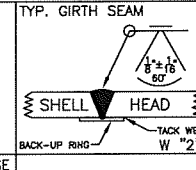
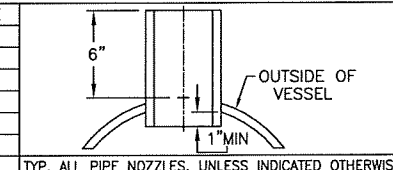


- GENERAL NOTES**
- 1) SA53B SMLS PIPE MAY BE SUBSTITUTED FOR SA106B SMLS PIPE.
 - 2) SA516-70 PLATE MAY BE SUBSTITUTED FOR SA36 PLATE.
 - 3) FABRICATION TOLERANCES PER RVS SHOP PROCEDURE NO. T-701.
 - 4) ALL BOLT HOLES STRADDLE CENTERLINE UNLESS INDICATED OTHERWISE.
 - 5) ALL CPLGS EXTEND INSIDE FOR WELDING UNLESS INDICATED OTHERWISE.

ALL WELDS UNLESS INDICATED OTHERWISE		
PROCESS	WPS NO.	ELECTRODE
GTAW	109	ER70S-2
SMAW	1002	E7018
FCAW	1005	E71T-1
GMAW-S	2002	ER70S-3
SAW	5005	L61 WIRE/960 FLUX



1			
0	7/28/99	RELEASED FOR FABRICATION	B.H. 7/28/99
Rev.	DATE	DESCRIPTION	APRV'D / DATE
SHIPPING DIMS: _____ Wt x _____ Ht x _____ LNG x 150 lbs DRY			

NATIONAL BOARD NO. _____
 CERTIFIED BY
 REFRIGERATION VALVES AND SYSTEMS CORPORATION
 BRYAN, TEXAS

MWP 300 PSI AT 300 °F
 WMT -50 °F AT 120 PSI

S/N 990744 -S YEAR 1999

SHELL THK HEAD THK U.S. GAL. SQ.FT. SURF.
 _____ in _____ in _____ _____

TEST WITH OIL

HYDRO NOTES:
 1) ESTIMATED VOLUME: 12 GAL.

BILL of MATERIALS													
NOZZLE SCHEDULE					SHELL, HEADS, INTERNALS, & SUPPORTS								
ITEM	QTY	SIZE	TYPE	RATING	MATERIAL	SERVICE	LENGTH	ITEM	QTY	SIZE	RATING	MATERIAL	LENGTH
R							16						
Q							15						
P							14						
N							13						
M							12						
L							11						
K							10						
J							9						
H							8						
G							7						
F							6						
E	1	1"	CPLG	3000#	SA105	HEATER CONN.	5	2	5 3/4" X 8"				
D	1	1/2"	CPLG	3000#	SA105	RELIEF	4	1	10"				
C	1	3/4"	PIPE	S/80	SA106B	VENT	7 1/2"	3	2	10"			
B	1	3/4"	PIPE(TOE)	S/80	SA106B	DRAIN	12"	2	2	10"			
A	1	1"	PIPE	S/80	SA106B	OIL INLET	7 1/2"	1	1	2"			

CUSTOMER **LEO DENOMY, INC.** P.O. 26655

VESSEL DESIGN SPECIFICATIONS
 DESIGN & CONSTRUCTION IN ACCORDANCE WITH SECTION VIII DIV. 1 ASME CODE FOR PRESSURE VESSELS 1998 EDITION & ADDENDA TO NONE

SHELL: SA106B S/40 (.125" MIN.) CA: 0
 HEADS: SA234-WPB S/40 (.124" MIN.) CAP. CA: 0
 M.A.W.P.: 300 P.S.I. HYDROTEST: 375 P.S.I.
 -20° TO 300 °F To DUAL STAMP-120 PSI @ -50 °F
 RT: LONG: NONE / GIRTH: NONE HT: NONE
 PAINT: SSPC-SP6, TEAL PRIMER

TITLE
10 3/4" O.D. X 3'-0" ASME 300# HORIZ. R-22 OIL POT

DRAWN BY: B.H. 7/28/99 CHK'D BY: B.H. 7/28/99 S/N: 990744-S
 APRV'D BY: B.H. 7/28/99 SCALE: 3"=1'-0" Thru

PRESSURE VESSELS and PACKAGED RECIRCULATION SYSTEMS

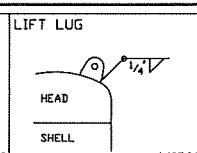
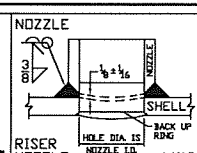
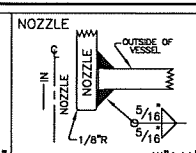
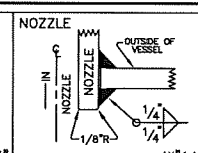
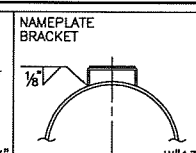
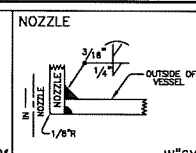
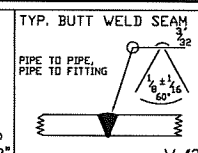
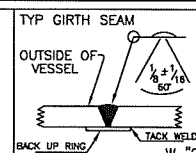
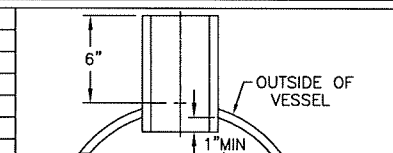
REFRIGERATION VALVES AND SYSTEMS CORPORATION
 1620 CROSSWIND DRIVE, BRYAN, TX. 77809

EVAPCO, INC.
 P.O. BOX 1800, WESTMINSTER, MD. 21158

DWG No. **T0379-P** REV. 0

- GENERAL NOTES**
- SA53B SMLS PIPE MAY BE SUBSTITUTED FOR SA106B SMLS PIPE.
 - SA516-70 PLATE MAY BE SUBSTITUTED FOR SA36 PLATE.
 - FABRICATION TOLERANCES PER RVS SHOP PROCEDURE NO. T-701.
 - ALL BOLT HOLES STRADDLE CENTERLINE UNLESS INDICATED OTHERWISE.
 - ALL CPLGS EXTEND INSIDE FOR WELDING UNLESS INDICATED OTHERWISE.

ALL WELDS UNLESS INDICATED OTHERWISE		
PROCESS	WPS NO.	ELECTRODE
GTAW	109	ER70S-2
SMAW	1002	E7018
FCAW	1005	E71T-1
GMAW-S	2002	ER70S-3
SAW	5005	L61 WIRE/960 FLUX



TYP. ALL PIPE NOZZLES, UNLESS INDICATED OTHERWISE

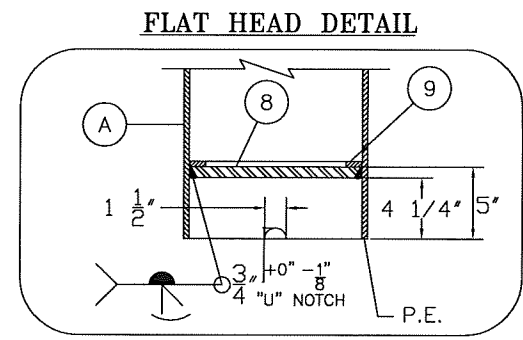
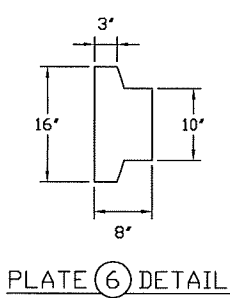
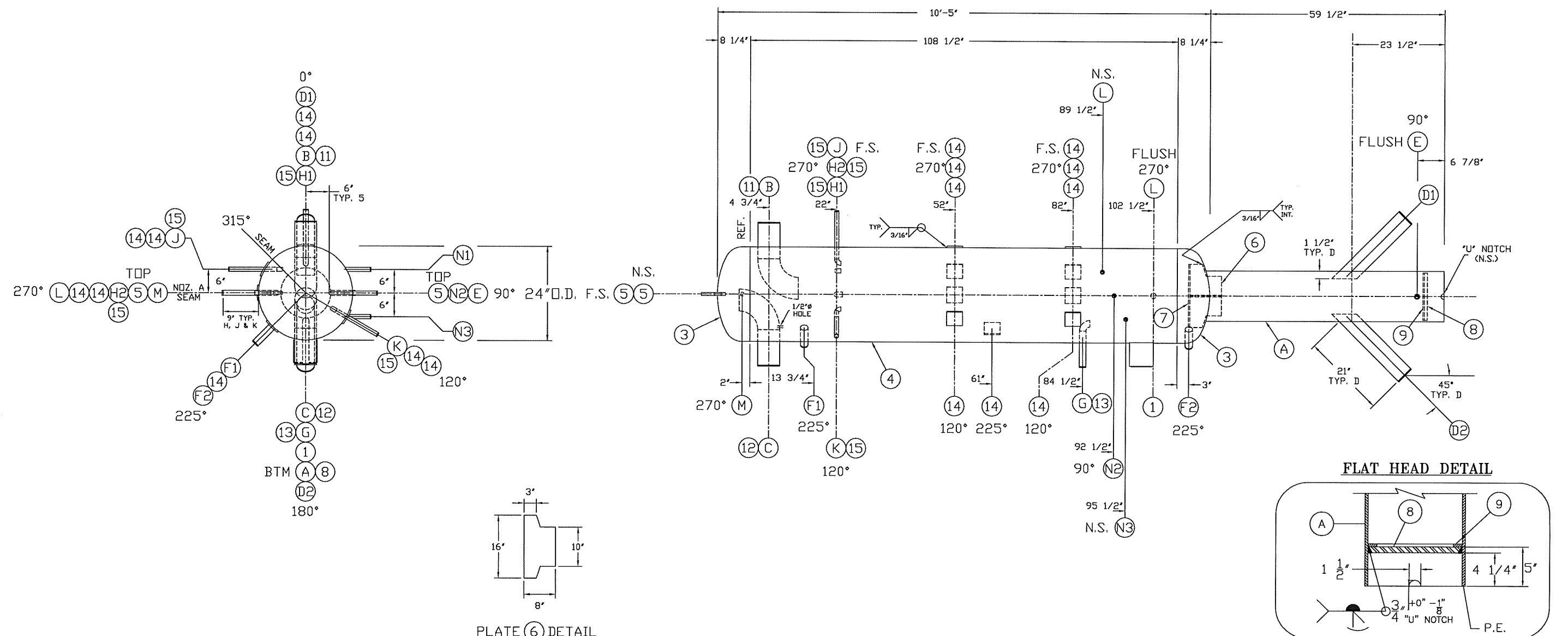
NOZ'S E & L

TYP. UNLESS INDICATED OTHERWISE

NOZ'S B & C

NOZZLE A

↑
SHOP NOTE:



1	7/28/99	RELEASED FOR FABRICATION	B.H. 7/28/99
Rev.	DATE	DESCRIPTION	APRV'D / DATE
SHIPPING DIMS: _____ Wi x _____ Hi x _____ LNG x 2,900 Lbs DRY			

U NATIONAL BOARD NO. _____
RES **W** CERTIFIED BY REFRIGERATION VALVES and SYSTEMS CORPORATION BRYAN, TEXAS
MWP 250 PSI AT 300 °F
MOMT -60 °F AT 100 PSI
S/N 990743 -S YEAR 1999
SHELL THK _____ HEAD THK _____ U.S. GAL. _____ SQ.FT. SURF. _____
RVS **evapco**

TEST WITH OIL

HYDRO NOTES:

- ESTIMATED VOLUME: 222 GAL.
- TEST WITH NOZZ. 'L' ON BTM.

BILL of MATERIALS

NOZZLE SCHEDULE					SHELL, HEADS, INTERNALS, & SUPPORTS				
ITEM	QTY	SIZE	TYPE	RATING	ITEM	QTY	SIZE	RATING	MATERIAL
N	3	3/4"	PIPE	S/80	16	4	3/4"		ELBOW
M	1	1/2"	LONG CPLG	3000#	15	9	4"		FLAT (W/ 1/4" WEEPHOLE)
L	1	3/4"	PIPE	S/80	14	1	1 1/2"		S/80 SA234-WPB L.R.
K	1	3/4"	PIPE	S/80	13	1	4"		S/80 SA234-WPB L.R.
J	1	3/4"	PIPE	S/80	12	1	5"		S/40 SA234-WPB L.R.
H	2	3/4"	PIPE	S/80	11	1	12"		S/40 SA234-WPB L.R.
G	1	1 1/2"	PIPE	S/80	10	1	11 7/8" O.D.		SA414
F	2	1 1/2"	PIPE	S/80	9	1	16"		SA36
E	1	1"	PIPE	S/80	8	2	8" X 16"		SA36
D	2	4"	PIPE	S/40	7	1	24"		SA516-70
C	1	5"	PIPE	S/40	6	2	24" O.D.		SA36
B	1	5"	PIPE	S/40	5	2	24"		SA36
A	1	12"	PIPE	S/STD	4	1	24"		SA414
					3	2	6"		SA36
					2	2	24"		SA36
					1	1	6"		SA36

CUSTOMER LEO DENOMY, INC. P.O. 26655

VESSEL DESIGN SPECIFICATIONS

DESIGN & CONSTRUCTION IN ACCORDANCE WITH SECTION VIII DIV. 1 ASME CODE FOR PRESSURE VESSELS 1998 EDITION & ADDENDA TO NONE

SHELL: SA53B-ERW S/STD (.273" MIN.) CA: 0
HEADS: SA516-70 3/8" (.199" MIN.) 2:1 CA: 0
M.A.W.P.: 250 P.S.I. HYDROTEST: 375 P.S.I.
-20°F TO 300 °F To DUAL STAMP-100 PSI @ -50 °F
RT: LONG: NONE / GIRTH: NONE HT: NONE
PAINT: SSPC-SP6, TEAL PRIMER

TITLE
24" O.D. X 10'-5" ASME 250#
R-22 VERT. ACCUMULATOR

REFRIGERATION VALVES and SYSTEMS CORPORATION
1520 CROSSWIND DRIVE, BRYAN, TX 77808
evapco
EVAPCO, INC.
P.O. BOX 1300, WESTMINSTER, MD. 21158

DRAWN BY: B.H. 7/28/99
APRV'D BY: B.H. 7/28/99
SCALE: 1" = 1'-0" Thru

DWG No. **T0379-D**
REV. 0