

## Freezing Systems Spiro-Freeze Spiral Freezer

**Mfg: Freezing Systems**

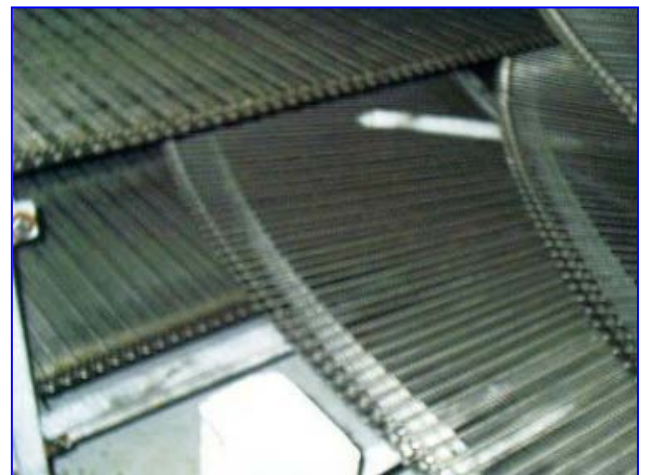
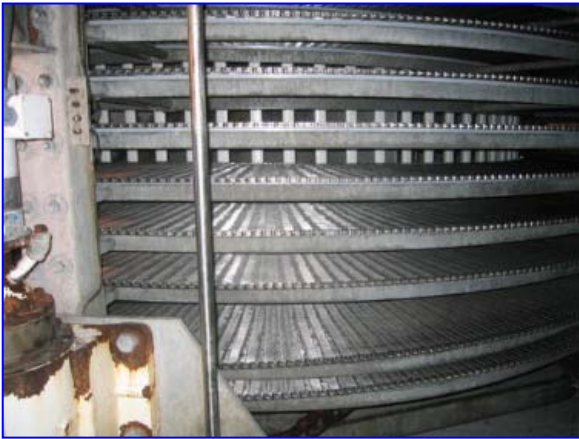
**Model:**

**Stock No: DMNY001**

**Serial No:**

Freezing Systems Spiro-Freeze Spiral Freezer. This freezer will allow user to freeze two separate product streams at the same time. Air inflow is from top down through center and then up through stacked tiers containing product before. (2) Infeed belts begin side by side and stack as they enter the freezer. Last used to freeze 1.8 oz eggplant pieces. Pieces entered at 180 °F with a 22 minute dwell time and exited at 18-20 °F. Capacity: approx. 2600 lbs/hr. Spiral freezer: 1 tower, 2 stacks, 8.5 tiers each. Infeed height: 36 in. each belt. Discharge height: belt #1- 11.3 in.; belt #2- 11.9 in. Tier spacing: 6 in. Product clearance: 3 in. Belt width: 30 in.; usable 28 in. Active belt length: 854 ft.; total belt length 1110 ft. Ram AC variable drive: 7.5 hp. Refrigeration components not included. Overall dimensions: 35 ft L x 35 ft W x 15 ft H.

Installed in 2000; decommissioned in October 2005. Ran 50 weeks/yr; 45 hrs/week.



Box 35 ft. x 35 ft. x 15 ft.



Opening gap from outside of links: 0.390 in.



Diameter of link: 0.060 in.



Distance of rods: 1.264 in.



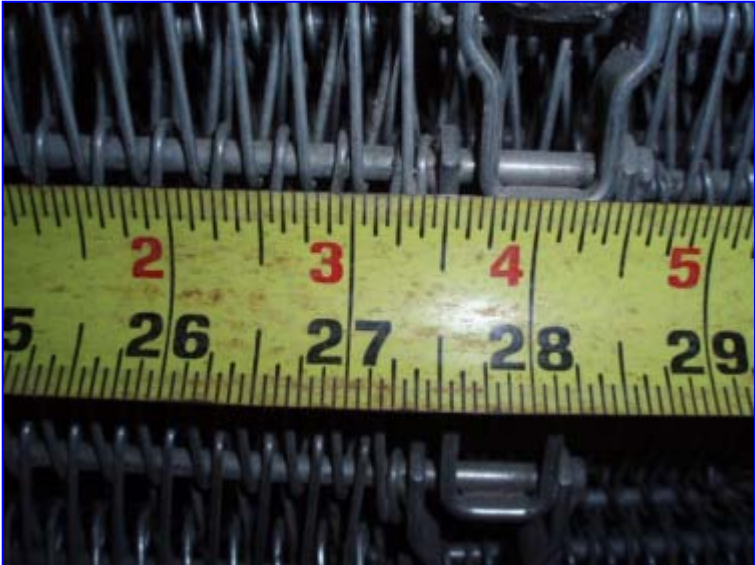
Rod diameter: 0.191



Effective belt with not including the links for chain drive

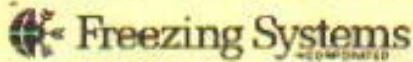


Measured effective belt with not including the links for chain drive: 27-1/2 in.



Detail of chain.





SPIRO-FREEZE

12-204

TECHNICAL SPECIFICATIONS

2/95

D

1/1

FOR DOMINEX  
8270 County Rd. 305 South  
Elkton, FL 32033

DATE July 22, 1999

REF. NO. 4000F

ATTENTION

PRODUCT DATA

PRODUCT Fried Egg Plant

REQUIRED CAPACITY (LBS/HR) 1500/2500

DESIGN PRODUCT 3" diam. x 3/8

DWELL TIME (MI) 25

DESIGN CAPACITY (LBS/HR)

INFEED TEMP 180°

DISC TEMP 0°

FREEZE TIME (MI)

FREEZE TESTED? No

BELT LOADING: RANDOM X PATTERN

UNIT WT (OZS) 2.75

UNITS PER LF 18.8

WEIGHT PER LF (LBS) 3.2

SPIRO-FREEZE DATA

MODEL NO. 3017D-(2)80-R18 (8.5 tiers each)

NO. OF TOWERS 1

NO. OF TIERS 17.0

BELT SPEC. B-36-12-16 Omni-Tough

BELT WIDTH (IN) 30

USABLE WIDTH (IN) 28

ACTIVE LENGTH (LF) 854

TOTAL LENGTH (LF) 1110

USDA APPROVAL Yes

TIER SPACING (IN) 6.0

PRODUCT CLEARANCE (IN) 3.0

BELT SPEED

DWELL TIME

DESIGN (FPM) 34.2

MIN. (FPM)

MAX. (FPM)

DESIGN (MI) 25

MAX. (MI)

MIN. (MI)

DRIVE TYPE AC Variable

DRIVE - HP 7.5

MATERIALS OF CONSTRUCTION Steel-hot dipped galvanized

COMP. HP 400

REFRIGERATION DATA

EVAP. MODEL (2) 80

COIL SURFACE

REFRIG Ammonia

SYSTEM TYPE Flooded

PRODUCT LOAD (TR) 87.7

BASE LOAD (TR) 22.8

TOTAL LOAD (TR) 110.3

EVAP TEMP -40°

AIR TEMP TO EVAP

AIR TEMP OFF EVAP

AIR VOLUME (CFM) 140,800

NO. OF FANS 8

HP - EA 7.5

TOTAL FAN - HP 90

POWER REQUIRED FOR SYSTEM

HP 52.5

VOLTS 460

PHASE 3

HERTZ 60

DEFROST TYPE Water

DEFROST WATER REQ'D (GPM) 112 each

DIMENSIONAL DATA

DIMENSIONS

INFEED

DISCHARGE

ENCLOSURE

SEE LAYOUT SHEET NO.

HEIGHT

36"/36"

11'-3"/11'-9"

14'-6"

OTHER

LENGTH

48"

12"

41'-3 1/2"

WIDTH

22'-1 1/2"