

1990 Precision Heat Exchanger Co. Tube Chiller with Surge Drum

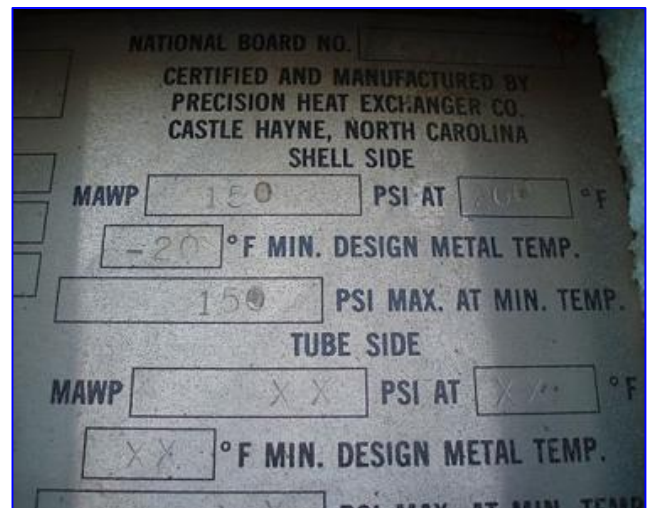
Mfg: Precision Heat Exchanger Co.

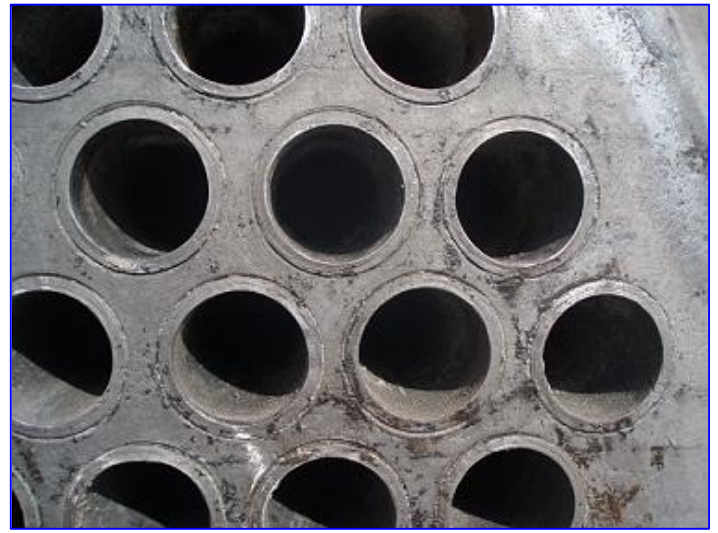
Model:

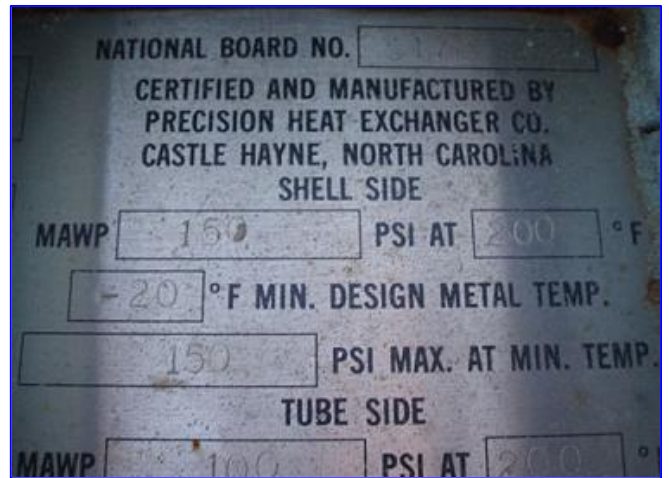
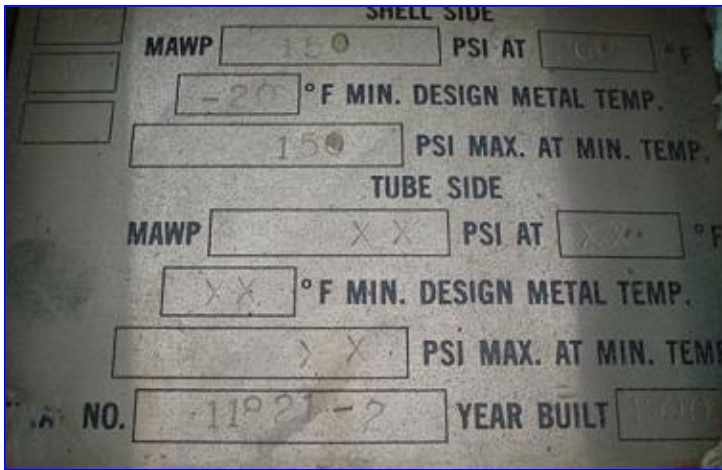
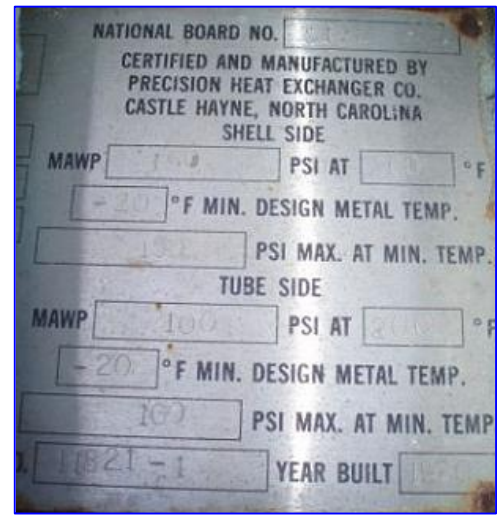
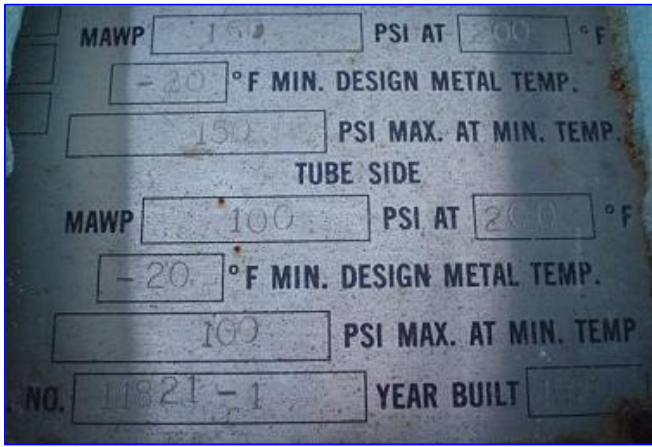
Stock No. DTTC2097.

Serial No. 11821-1

1990 Precision Heat Exchanger Co. Tube Chiller with Surge Drum. S/N: 11821-1. Nat'l Bd: 5172. Tube material: carbon steel. Number of passes: 4. Number of tubes: 184. Tube dimensions: 1 in. dia. x 24 ft. 1-1/2 in. Heat transfer surface area: approx. 1,162 sq. ft. Tube volume: 180 gal. MAWP shell side: 150 psi @ 200 °F. MDMT: -20 °F @ 150 psi. MAWP tube side: 100 psi @ 200 °F. MDMT tube side: -20 °F @ 100 psi. Precision Heat Exchanger Surge Drum, S/N: 11821-2, Nat'l Bd: 5173, MAWP shell side: 150 psi @ 200 °F, MDMT shell side: -20 °F @ 150 psi, (2) Parker Float Switches. Inlets: (1) 4 in. dia. flanged fitting, (2) 4 in. dia. ports, (2) 1 in. dia. NPT fittings. Outlets: (1) 4 in. dia. flanged fitting, (2) 1-1/2 in. dia. ports, (1) 3/4 in. dia. port. Overall dimensions: 30 ft. 10 in. L x 5 ft. 4 in. W x 8 ft. 2-1/2 in. H.







Note: the following pictures show the exact unit prior to removal.



