

# Axial Fan Models PMCB 290 to 1550

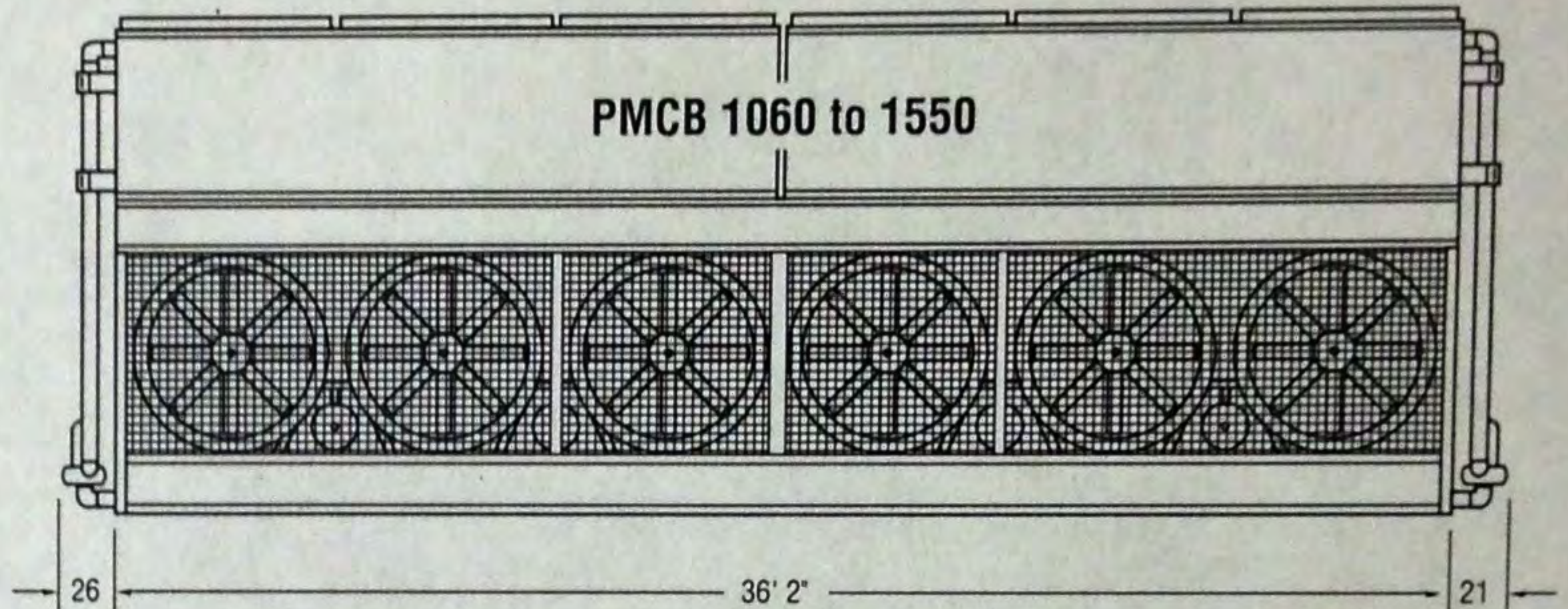
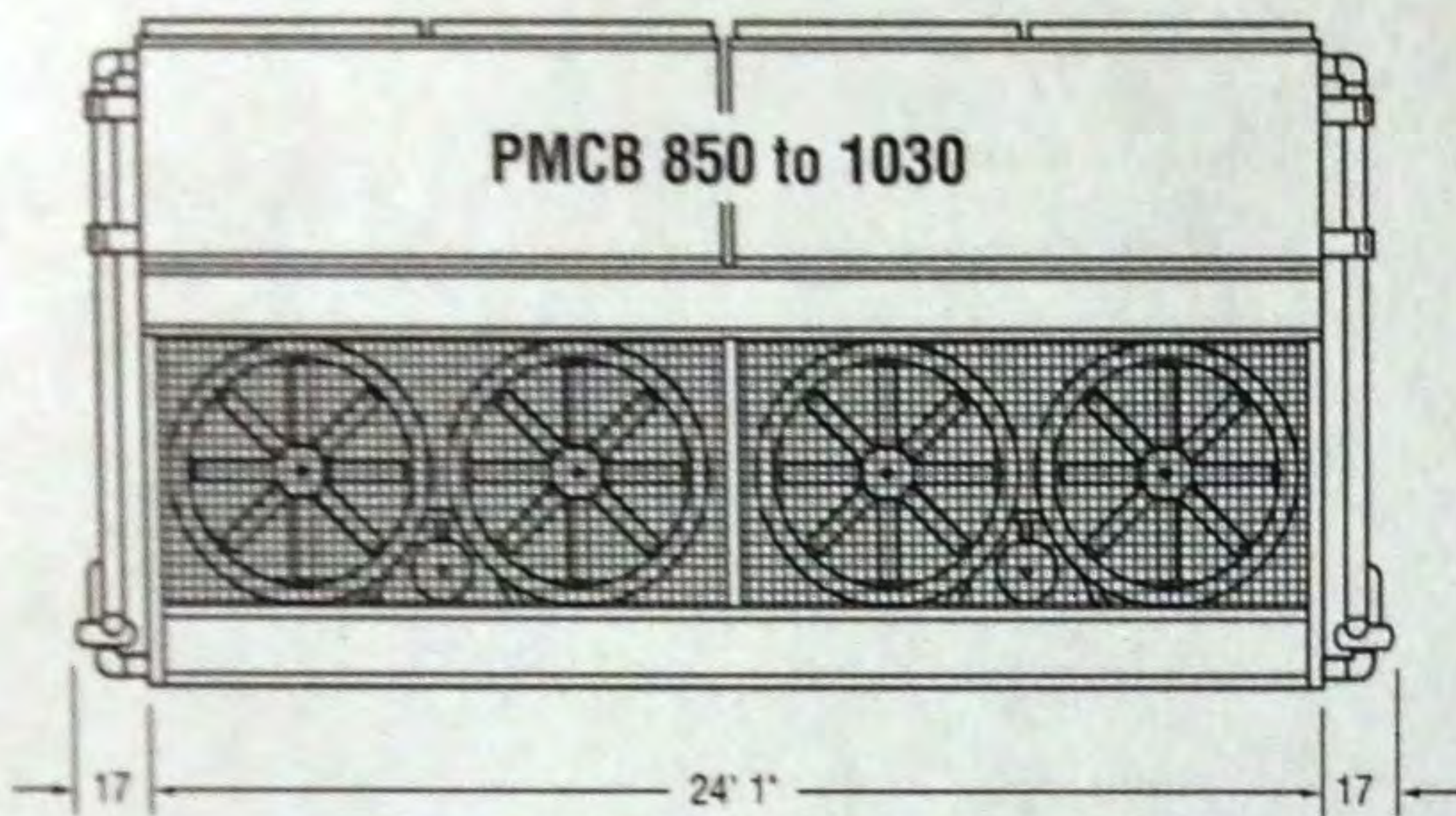
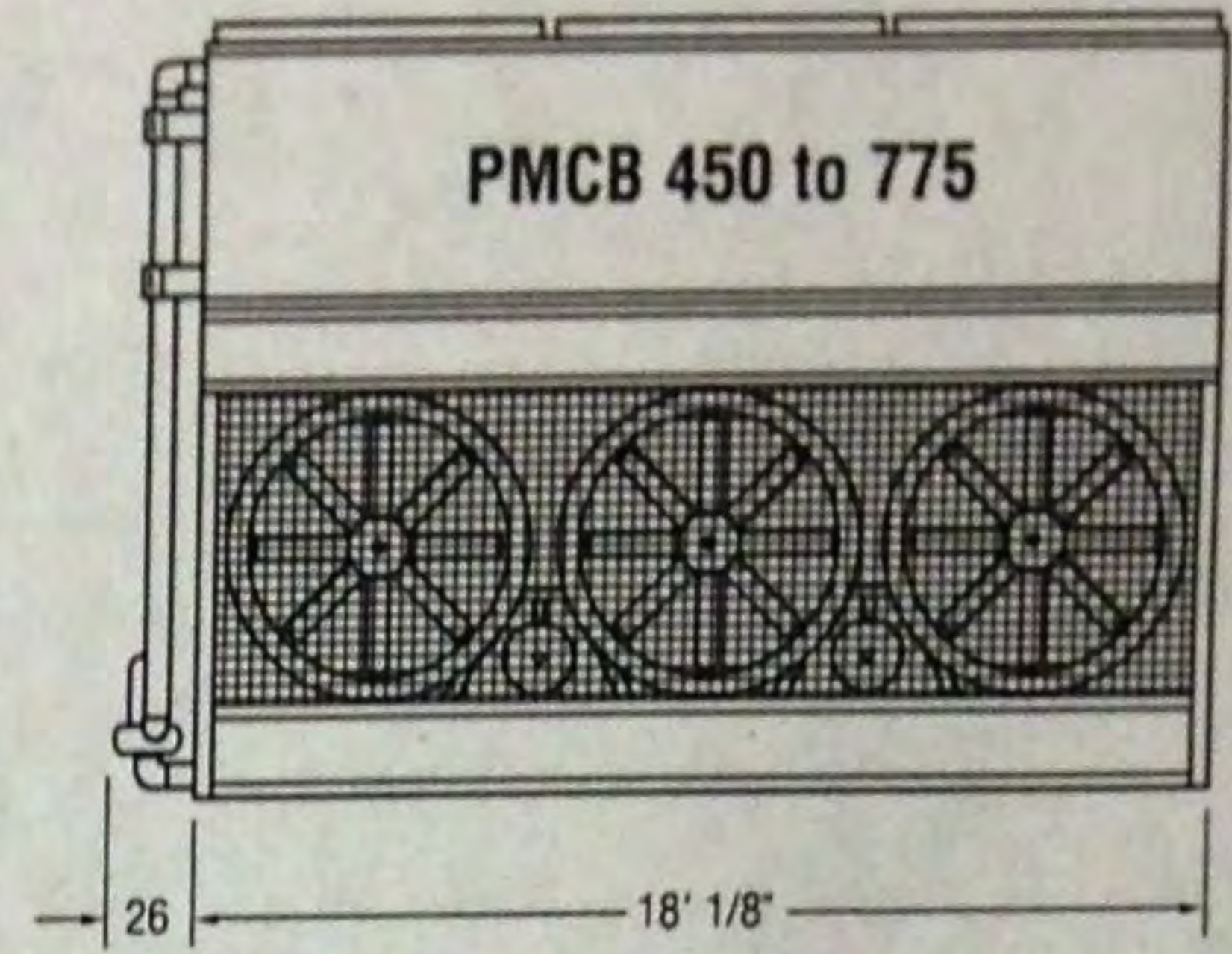
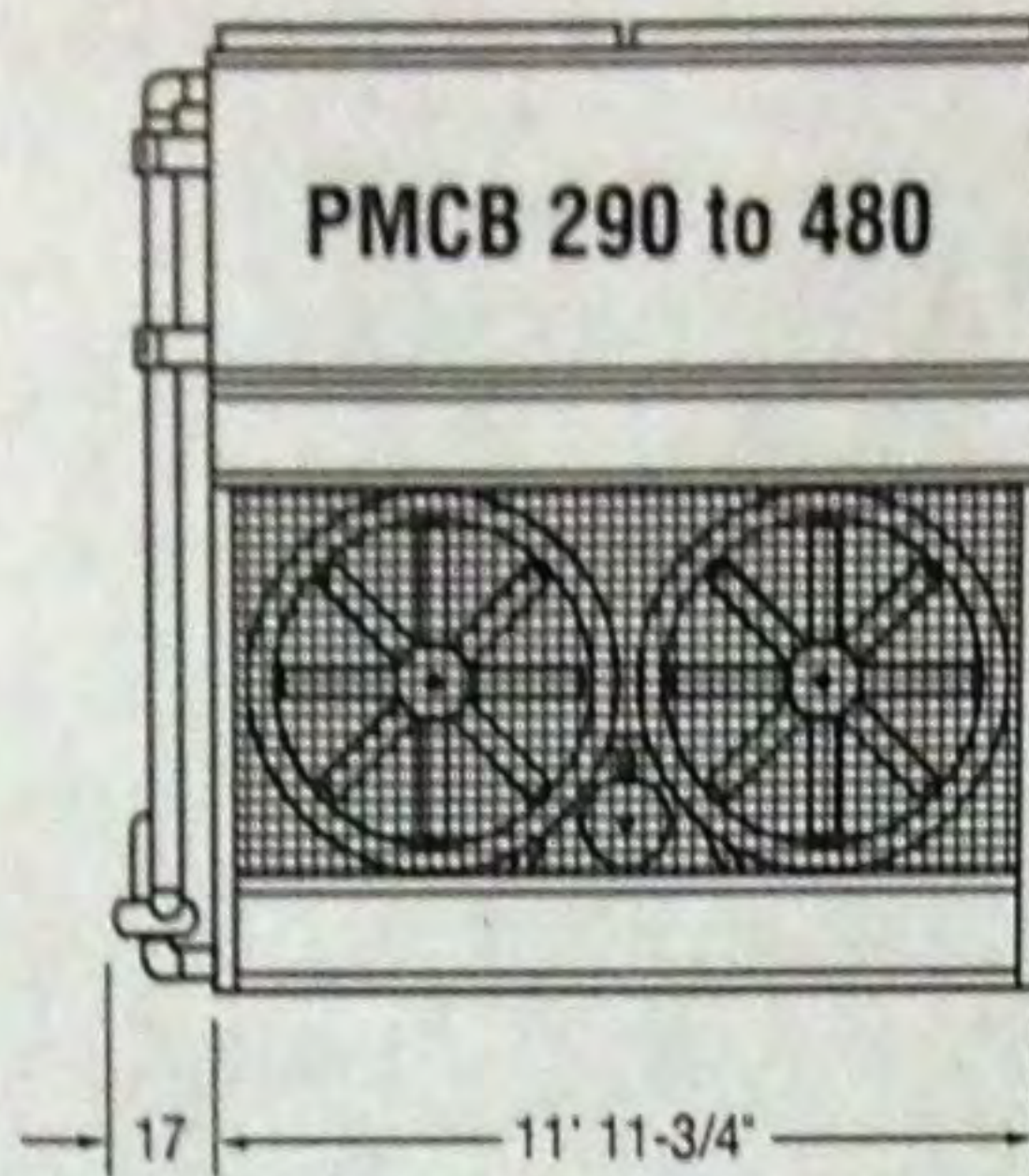
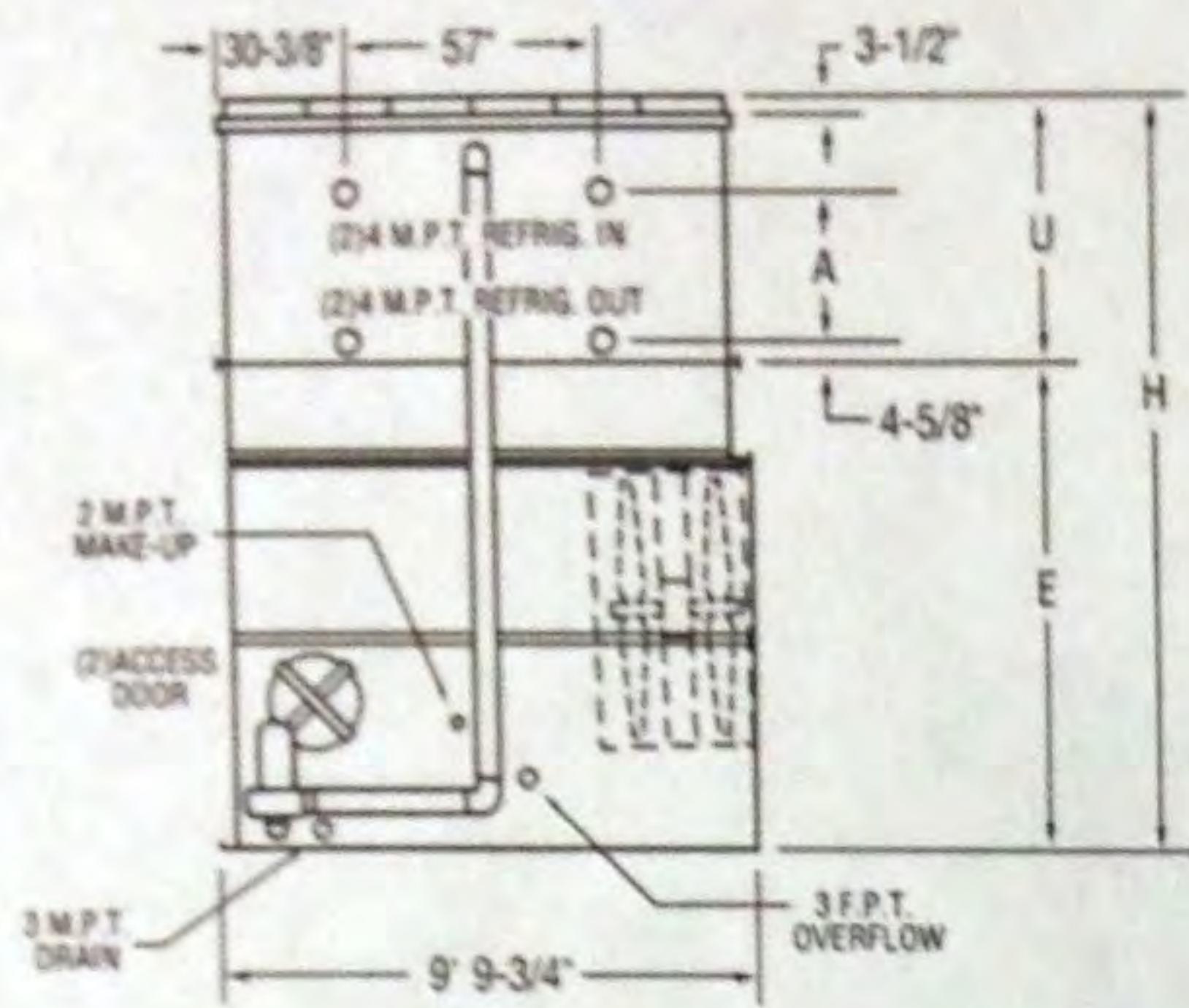


Table 18 Engineering Data

PMCB Model No.*	R-717 Tons*	Fans		Weights			Refrigerant Operating Charge lbs.	Coil Volume ft <sup>3</sup>	Spray Pump		Remote Pump			Dimensions			
		HP	CFM	Shipping	Operating	Heaviest Section†			HP	GPM	Gallons Req'd**	Conn. Size	Operating Weight	Height H	Upper U	Lower E	Coil A
290	206	10	62,300	12,870	18,530	8,530	330	38	5	685	420	10"	17,230	12' 6-1/4"	3' 11-3/4"	8' 6-1/2"	22-1/4"
330	234	7-1/2	56,500	14,890	20,740	10,740	440	50	5	685	420	10"	19,440	13' 2-3/4"	4' 8-1/8"	8' 6-1/2"	30-3/4"
350	248	10	61,600	14,980	20,830	10,740	440	50	5	685	420	10"	19,530	13' 2-3/4"	4' 8-1/8"	8' 6-1/2"	30-3/4"
385	273	10	60,400	17,090	23,170	12,940	550	62	5	685	420	10"	21,870	13' 11-1/4"	5' 4-3/4"	8' 6-1/2"	39-1/4"
390	277	15	67,800	15,130	20,980	10,740	440	50	5	685	420	10"	19,680	13' 2-3/4"	4' 8-1/8"	8' 6-1/2"	30-3/4"
415	294	20	74,000	15,250	21,100	10,740	440	50	5	685	420	10"	19,800	13' 2-3/4"	4' 8-1/8"	8' 6-1/2"	30-3/4"
425	301	15	66,100	17,240	23,320	12,940	550	62	5	685	420	10"	22,020	13' 11-1/4"	5' 4-3/4"	8' 6-1/2"	39-1/4"
455	323	20	72,500	17,360	23,440	12,940	550	62	5	685	420	10"	22,140	13' 11-1/4"	5' 4-3/4"	8' 6-1/2"	39-1/4"
480	340	25	76,500	17,500	23,580	12,940	550	62	5	685	420	10"	22,280	13' 11-1/4"	5' 4-3/4"	8' 6-1/2"	39-1/4"
450	319	10 & 5	96,500	19,030	27,180	12,380	490	56	7-1/2	1,030	620	12"	25,230	12' 6 1/4"	3' 11-3/4"	8' 6-1/2"	22-1/4"
585	415	10 & 5	92,500	25,570	34,420	18,680	820	92	7-1/2	1,030	620	12"	32,470	13' 11-1/4"	5' 4-3/4"	8' 6-1/2"	39-1/4"
630	447	20 & 10	112,700	22,710	31,210	15,500	660	74	7-1/2	1,030	620	12"	29,260	13' 2-3/4"	4' 8-1/8"	8' 6-1/2"	30-3/4"
645	457	15 & 7-1/2	102,000	25,760	34,610	18,680	820	92	7-1/2	1,030	620	12"	32,660	13' 11-1/4"	5' 4-3/4"	8' 6-1/2"	39-1/4"
690	489	20 & 10	109,300	25,910	34,760	18,680	820	92	7-1/2	1,030	620	12"	32,810	13' 11-1/4"	5' 4-3/4"	8' 6-1/2"	39-1/4"
725	514	25 & 15	114,800	26,450	35,300	18,680	820	92	7-1/2	1,030	620	12"	33,350	13' 11-1/4"	5' 4-3/4"	8' 6-1/2"	39-1/4"
755	535	25 & 15	114,000	29,390	38,590	21,870	990	110	7-1/2	1,030	620	12"	36,640	14' 7-3/4"	6' 1-1/4"	8' 6-1/2"	47-3/4"
775	550	30 & 15	117,000	29,930	39,130	21,870	990	110	7-1/2	1,030	620	12"	37,180	14' 7-3/4"	6' 1-1/4"	8' 6-1/2"	47-3/4"
850	603	(2)15	132,200	34,020	46,270	12,940	1,100	124	(2)5	1,370	850	12"	43,670	13' 11-1/4"	5' 4-3/4"	8' 6-1/2"	39-1/4"
910	645	(2)20	145,000	34,260	46,510	12,940	1,100	124	(2)5	1,370	850	12"	43,910	13' 11-1/4"	5' 4-3/4"	8' 6-1/2"	39-1/4"
950	674	(2)20	142,400	38,480	51,100	15,150	1,320	148	(2)5	1,370	850	12"	48,500	14' 7-3/4"	6' 1-1/4"	8' 6-1/2"	47-3/4"
960	681	(2)25	153,000	34,540	46,790	12,940	1,100	124	(2)5	1,370	850	12"	44,190	13' 11-1/4"	5' 4-3/4"	8' 6-1/2"	39-1/4"
1000	709	(2)25	150,000	38,760	51,380	15,150	1,320	148	(2)5	1,370	850	12"	48,780	14' 7-3/4"	6' 1-1/4"	8' 6-1/2"	47-3/4"
1030	730	(2)30	154,200	39,080	51,700	15,150	1,320	148	(2)5	1,370	850	12"	49,100	14' 7-3/4"	6' 1-1/4"	8' 6-1/2"	47-3/4"
1060	752	(2)10 & (2)5	185,700	44,260	61,380	15,500	1,320	148	(2)7-1/2	2,060	1,620	14"	57,480	13' 2-3/4"	4' 8-1/8"	8' 6-1/2"	30-3/4"
1175	833	(2)15 & (2) 7-1/2	209,000	44,640	61,760	15,500	1,320	148	(2)7-1/2	2,060	1,620	14"	57,860	13' 2-3/4"	4' 8-1/8"	8' 6-1/2"	30-3/4"
1260	894	(2)20 & (2)10	225,400	44,960	62,080	15,500	1,320	148	(2)7-1/2	2,060	1,620	14"	58,180	13' 2-3/4"	4' 8-1/8"	8' 6-1/2"	30-3/4"
1380	979	(2)20 & (2)10	218,600	51,360	69,180	18,680	1,640	184	(2)7-1/2	2,060	1,620	14"	65,280	13' 11-1/4"	5' 4-3/4"	8' 6-1/2"	39-1/4"
1510	1071	(2)25 & (2)15	228,000	58,320	76,820	21,870	1,980	220	(2)7-1/2	2,060	1,620	14"	72,920	14' 7-3/4"	6' 1-1/4"	8' 6-1/2"	47-3/4"
1550	1100	(2)30 & (2)15	234,000	59,400	77,900	21,870	1,980	220	(2)7-1/2	2,060	1,620	14"	74,000	14' 7-3/4"	6' 1-1/4"	8' 6-1/2"	47-3/4"

\* Tons at standard conditions: HCFC-22 and HFC-134a. 105°F condensing, 40°F suction and 78°F W.B.; ammonia 96.3°F condensing, 20°F suction and 78°F W.B.  
 \*\* Gallons shown is water in suspension in unit and piping. Allow for additional water in bottom of remote sump to cover pump suction and strainer during operation. (12" would normally be sufficient.)  
 † Heaviest section is the coil section.

Refrigerant charge is shown for R-717. Multiply by 1.93 for R-22 and 1.98 for R-134a.  
 Dimensions are subject to change. Do not use for pre-fabrication.