

Unused Surplus Frick Spare Parts

Mfg: Frick, Parker, Danfoss

Model:

Stock No.: HGPM051A

Serial No.:

Unused Surplus Frick Spare Parts for Startup Installation on Frick RWF-II-270 and RWF-II-480 compressors.

- Frick - Johnson Controls Super Filter II. Part number 531B0100H03. Quantity available: 10+. Frick - Johnson Controls Super Filter II. Part number 531B0100H02. Quantity available: 10+.
- Parker R/S Division RSF Strainer. 2010, 2 inch, 27 bar, 400 PSIG. 300151. 300149. Quantity available: 13.
- Parker R/S Division Valve - 1-5/8 in.. CK-1A. Port DN40 1-5/8 inch. Serial 12 2010. For NH3 Ammonia, freon, R-12, R-22, R502. Design pressure MRP 27 bar (400 PSIG). Temp -45C to +105F. 301179. 301026. 301178. USA. Quantity available: 13.
- Danfoss Stop Valve with Handwheel - 8 in. SVA-HS 200 A 121. 8 inch. 148B323701. Quantity 2. DN200. PS 40. 148B0518. G20Mn5QT. YZ P0924. CE0045.
- Danfoss Stop Valve with Handwheel - 6 in. SVA-HS 150. 6 inch. A ANG 121. 148B319701.
- Danfoss Stop Valve with Handwheel - 5 in. SVA-ST 125 A. 5 inch. ANG. 148B427401. DN125. PS40. 148B0514. G20Mn5QT. CE0045. Quantity 2.
- Danfoss Stop Valve - 1.5 in. SVA ST DN40 1-1/2 inch. PS40/580 PSI at -50C (-58F) to +150C (+302F). 5010BC. P285QH. PS40. CE0045. DN 40 SOC. G20Mn5QT. 695P. Quantity available: 13.

See additional pages below.

Frick - Johnson Controls Super Filter II. Part number 531B0100H03. Quantity available: 10+.



Frick - Johnson Controls Super Filter II. Part number 531B0100H02. Quantity available: 10+.



Parker R/S Division RSF Strainer. 2010, 2 inch, 27 bar, 400 PSIG. 300151. 300149. Quantity available: 13.



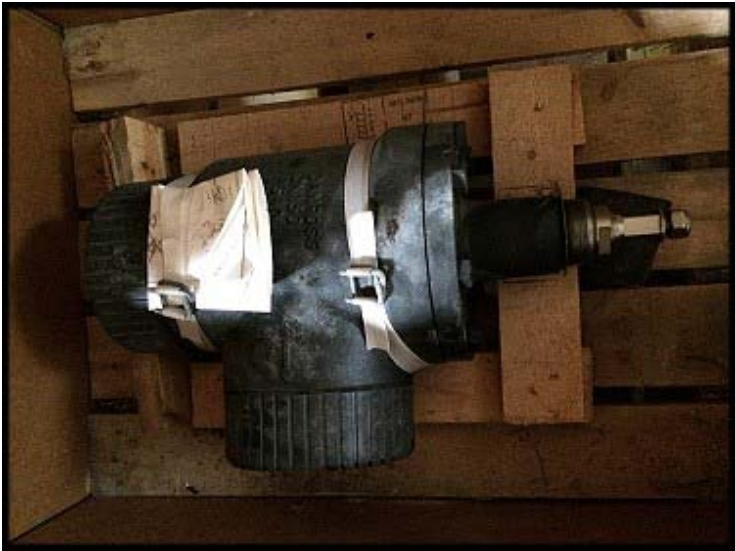
Parker R/S Division Valve - 1-5/8 in.. CK-1A. Port DN40 1-5/8 inch. Serial 12 2010. For NH3 Ammonia, freon, R-12, R-22, R502. Design pressure MRP 27 bar (400 PSIG). Temp -45C to +105F. 301179. 301026. 301178. USA. Quantity available: 13.



Danfoss Stop Valve with Handwheel - 8 in. SVA-HS 200 A 121. 8 inch. 148B323701. Quantity 2. DN200. PS 40. 148B0518. G20Mn5QT. YZ P0924. CE0045.



Danfoss Stop Valve with Handwheel - 6 in. SVA-HS 150. 6 inch. A ANG 121. 148B319701.



Danfoss Stop Valve with Handwheel - 5 in. SVA-ST 125 A. 5 inch. ANG. 148B427401. DN125. PS40. 148B0514. G20Mn5QT. CE0045. Quantity 2.



Danfoss Stop Valve - 1.5 in. SVA ST DN40 1-1/2 inch. PS40/580 PSI at -50C (-58F) to +150C (+302F).
5010BC. P285QH. PS40. CE0045. DN 40 SOC. G20Mn5QT. 695P. Quantity available: 13.



