

2000 H.A. Phillips and Company Horizontal Receiver- 7 Gallon

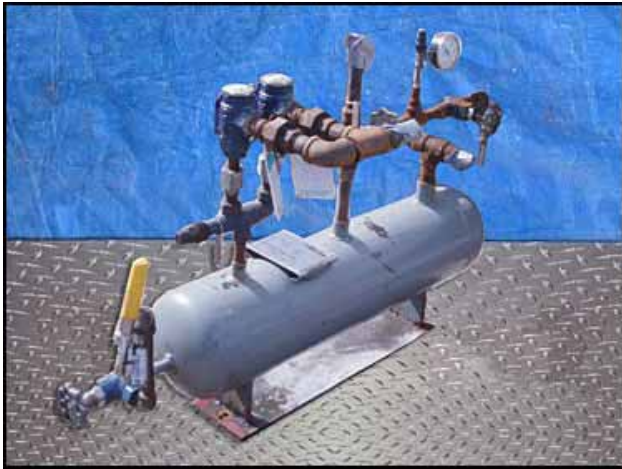
Mfg: H.A. Phillips and Company

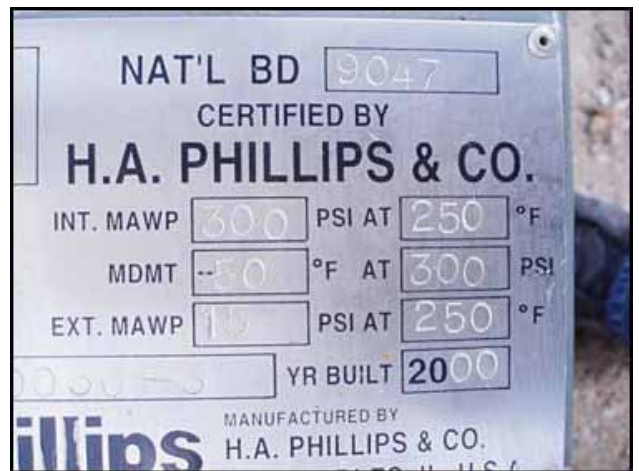
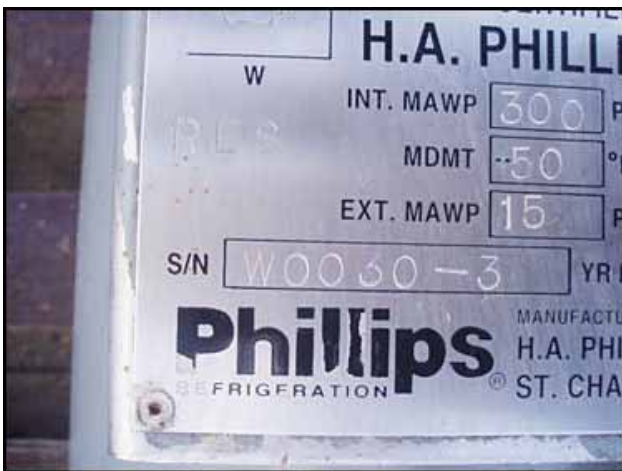
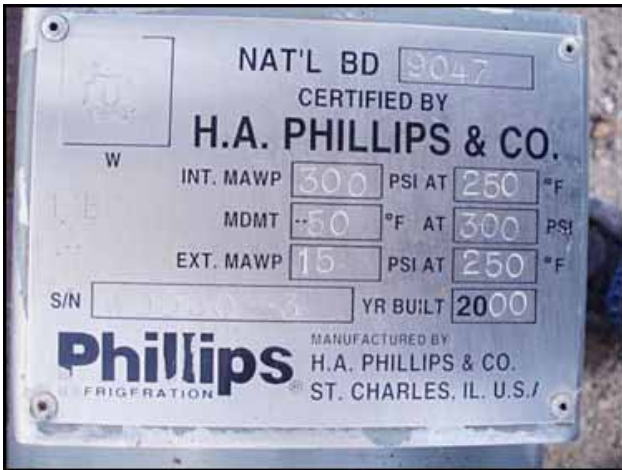
Model:

Stock No.: RGMP516

Serial No.: W0030-3

2000 H.A. Phillips and Company Horizontal Receiver- 7 Gallon. S/N: W0030-3. Nat'l Bd: 9047. Inside straight-wall dimensions: 8 in. dia. x 2 ft. 9 in. L. Int. MAWP: 300 psi @ 250°F. MDMT: -50°F @ 300 psi. Ext. MAWP: 15 psi @ 250°F. (2) Hansen Technologies Pressure Relief Valves. Inlets: (3) 3/4 in. dia. ports. Outlets: (1) 1 in. dia. relief port, (1) 1/2 in. dia. port. Overall dimensions: 4 ft. 9 in. L x 1 ft. 6 in. W x 2 ft. 5 in. H.





NAT'L BD 9047
 CERTIFIED BY
H.A. PHILLIPS & CO.
 W
 INT. MAWP 300 PSI AT 250 °F
 MDMT -50 °F AT 300 PSI
 EXT. MAWP 15 PSI AT 250 °F
 S/N W0030-3 YR BUILT 2000
Phillips FRIGERATION
 MANUFACTURED BY
 H.A. PHILLIPS & CO.
 ST. CHARLES, IL, U.S.A.

Pressure-Relief Valve
 Cat. No.: 4588
 Air Capacity: 798 SCFM
 Set Pressure: 250 PSI
 Inlet Outlet
 Size: inch
 Serial No.:
HANSEN TECHNOLOGIES CORPORATION U.S.A.

H.A. PHILLIPS
 W
 INT. MAWP 300 PSI
 MDMT -50 °F
 EXT. MAWP 15 PSI
 S/N W0030-3 YR BUILT 2000
Phillips FRIGERATION
 MANUFACTURED BY
 H.A. PHILLIPS & CO.
 ST. CHARLES, IL, U.S.A.

NAT'L BD 9047
 CERTIFIED BY
H.A. PHILLIPS & CO.
 INT. MAWP 300 PSI AT 250 °F
 MDMT -50 °F AT 300 PSI
 EXT. MAWP 15 PSI AT 250 °F
 S/N W0030-3 YR BUILT 2000
Phillips FRIGERATION
 MANUFACTURED BY
 H.A. PHILLIPS & CO.
 ST. CHARLES, IL, U.S.A.